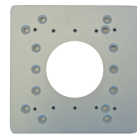


Accessories

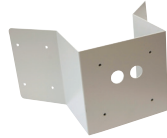
MV-EBA
Electrical Box Adapter



MD-PMA
Pole Mount Adapter



MD-CRMA
Corner Mount Adapter



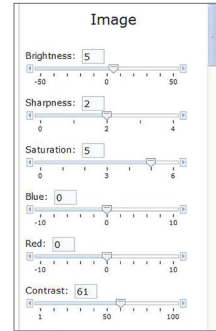
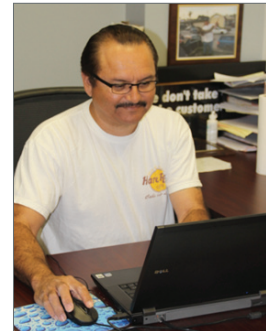
SV-JBA
Junction Box Adapter



User-Friendly Web Interface

For easy install configuration and ongoing control, our new user-friendly web interface management system is loaded with easy to use menus to adjust and fine tune your camera settings. Slider bars and numeric text boxes allow complete control of the following camera features;

- Image Settings
- Video Compression
- H.264 Stream Settings
- Network Options
- Motion Detection
- Privacy Mask Settings
- Administration
- About - Camera Details



MegaView® Megapixel IP Cameras

All-in-One H.264 Bullet Camera Solutions



IR Model

Global Sales and Support

Arecont Vision is the leading manufacturer of high-performance megapixel IP cameras and associated software. All Arecont Vision cameras are made in the USA.



North America

Los Angeles, USA
Arecont Vision, LLC. Headquarters
425 E. Colorado St., 7th Floor
Glendale, CA 91205, USA

Phone: +1.818.937.0700
Toll Free: 877.CAMERA.8
Fax: +1.818.937.0464

Sales

Phone: +1.818.937.0700 x 3
Email: avsales@arecontvision.com

Support

Phone: +1.818.937.0700 x 1
Email: support@arecontvision.com

South America

Latin America
Email: latam.sales@arecontvision.com

EMEA

Frankfurt, Germany
Arecont Vision Europe GmbH
Lyoner Straße 38, 5th Floor
60528 Frankfurt, Germany

Phone: +49.69.6953.4600
Email: europe.sales@arecontvision.com

Moscow, Russia

CJSC Arecont Vision
121351, Russian Federation, Moscow, 58/1,
Molodogvardeiskaya str.

Phone: +7.495.649.0577
Fax: +7.495.221.5227
Email: info@arecontvision.ru

Middle East

Email: mena.sales@arecontvision.com

Africa

Email: africa.sales@arecontvision.com

APAC

Shanghai, China
Resident Representative Office of
Arecont Vision, LLC in Shanghai
Taolin Road No. 18, Building A
World Plaza, Room #1603
Pudong New District, Shanghai, 200135
P.R.China

Phone: +86.21.6176.2596
Alt. Phone: +86.21.6176.2597
Fax: +86.21.6085.2520
Email: apac.sales@arecontvision.com



Wide Field of View



Telephoto Field of View

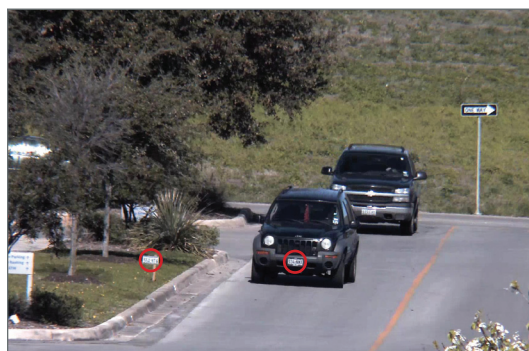
All-in-One Solutions – MegaView® and MegaView® with IR

MegaView® multi-megapixel cameras provide ample resolution to zoom-in for details in live or recorded video. These indoor/outdoor all-in-one solutions integrate a 1.3-, 1080p, 3- or 5-megapixel cameras with fast frame rates and an IR corrected vari-focal lens into an IP66 environmental rated bullet-style housing. H.264 compression reduces bandwidth and storage requirements while delivering full frame rates and full resolution without sacrificing image quality.

Highlighted Features:

- Dual Encoder: H.264 and MJPEG
- Fast Frame Rates. Casino Mode™ in 1080p Models (Maintains 30fps or Higher)
- Day/Night or Day/Night with IR Illuminator Option
- Integrated 4.5–10mm IR Corrected Vari-Focal Lens
- Easily Adjustable 3-Axis Bracket
- Binning Mode for Increased Low-Light Sensitivity on 3MP and 5MP
- 1024-Zone Motion Detection
- Privacy Masking For Multiple Regions
- ONVIF and PSIA Conformant
- PoE (Power over Ethernet) or Auxiliary Power: 12-48V DC/24V AC

Increased Resolution for Forensic Zooming



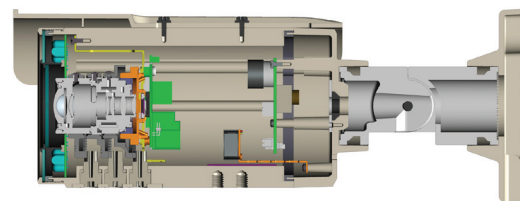
The license plate marker: 90ft (27.4m) from camera
Camera: AV5125v1 @ 10mm
Pixel density archived: 50PPF (164PPM)

Arecont Vision MegaView® cameras allow you to choose the level of resolution you need. In applications where extreme detail is required, such as license plate or face recognition, a higher resolution camera can be selected to ensure sufficient pixel density is delivered. Because megapixel images have a greater number of pixels than VGA images, MegaView® cameras allow users to view up-close details in live or recorded video at any time without compromising overall surveillance—an added benefit not possible with conventional PTZ cameras.

Compliant H.264 Compression

- Compliant implementation of H.264 allows full frame rates and full resolution without sacrificing image quality
- H.264 and MJPEG dual compression support with simultaneous streaming
- Decreases the CPU load both at the client (decompression) side and the server/storage side
- Lower bandwidth and storage relative to MJPEG
- Bit rate control to maintain desired bandwidth and storage size
- Real Time Streaming Protocol (RTSP) allows for compatibility with media players such as Apple QuickTime®, VLC and others

Easy and Efficient All-in-One Design



The MegaView® series is an all-in-one imaging solution complete with a high performance megapixel camera, IR corrected megapixel lens, IR LED array, heater, blower and ruggedized IP66-rated cylindrical enclosure. MegaView® delivers a complete imaging solution ideal for virtually any mainstream application, with exceptional performance and ease of installation.

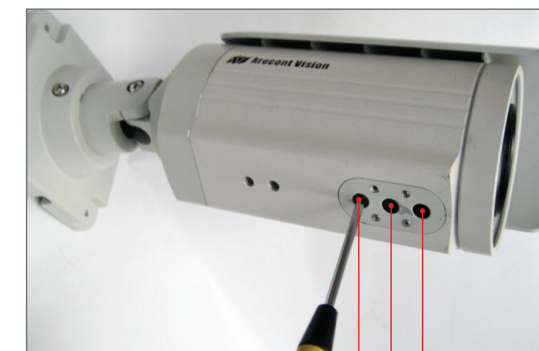


IR Illuminator Specifications



RL Illuminator Key Specs	
IR LEDs	48 pcs
IR Wavelength	850nm
IR Distance	25m
IR Angle	45°
Power Consumption	3 Watts

Easy Installation and Adjustment



MegaView® cameras feature 3-axis brackets and easy cable management for fast and easy installation, allowing you to precisely position the camera. More importantly, the cameras' focus, iris and zoom controls are all externally accessible making camera adjustment fast and simple using a security key.

Enhanced Low-Light Performance



Day Mode



Night Mode

As part of their superior Day/Night operation, MegaView® cameras include low-light enhancing technology such as binning and adaptive noise-cancellation. This functionality along with integrated IR illumination provides a winning combination in complete darkness.

Captures Images Even in Total Darkness



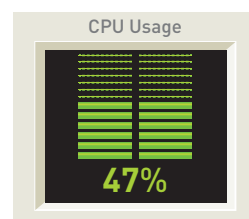
Normal Lighting Conditions



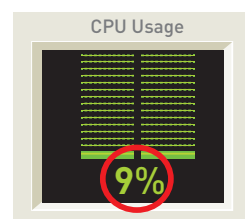
Low-Light Conditions

MegaView® cameras take low-light performance to the extreme. Their Day/Night capability automatically switches from color to black/white operation to increase sensitivity at night. The binning function further provides increased sensitivity and improved low-light performance. But when the lights are out, MegaView® can still capture all the action by using integrated Infrared Illumination (IR) as shown above.

H.264 Decompression (example)



2MP with live video in MJPEG



2MP with live video in H.264

H.264 MegaView® Series

Model	Resolution		Min Illumination	Binning	ONVIF/PSIA	Max Frame Rate @ Full Resolution	Lens	H.264/MJPEG	Day/Night	Blower	IR
AV1125DNv1	1.3MP	1280 x 1024	0.1 Lux Color 0 Lux, IR Sensitive		•	42fps	4.5–10mm IR Corrected	•	•	•	
AV1125IRv1	1.3MP	1280 x 1024	0.1 Lux Color 0 Lux, IR Sensitive		•	42fps	4.5–10mm IR Corrected	•	•	•	•
AV2125DNv1	1080p	1920 x 1080	0.1 Lux Color 0 Lux, IR Sensitive		•	32fps	4.5–10mm IR Corrected	•	•	•	
AV2125IRv1	1080p	1920 x 1080	0.1 Lux Color 0 Lux, IR Sensitive		•	32fps	4.5–10mm IR Corrected	•	•	•	•
AV3125DNv1	3MP	2048 x 1536	0.3 Lux Color 0 Lux, IR Sensitive	•	•	21fps	4.5–10mm IR Corrected	•	•	•	
AV3125IRv1	3MP	2048 x 1536	0.3 Lux Color 0 Lux, IR Sensitive	•	•	21fps	4.5–10mm IR Corrected	•	•	•	•
AV5125DNv1	5MP	2592 x 1944	0.3 Lux Color 0 Lux, IR Sensitive	•	•	14fps	4.5–10mm IR Corrected	•	•	•	
AV5125IRv1	5MP	2592 x 1944	0.3 Lux Color 0 Lux, IR Sensitive	•	•	14fps	4.5–10mm IR Corrected	•	•	•	•